

Appearance



Introduction

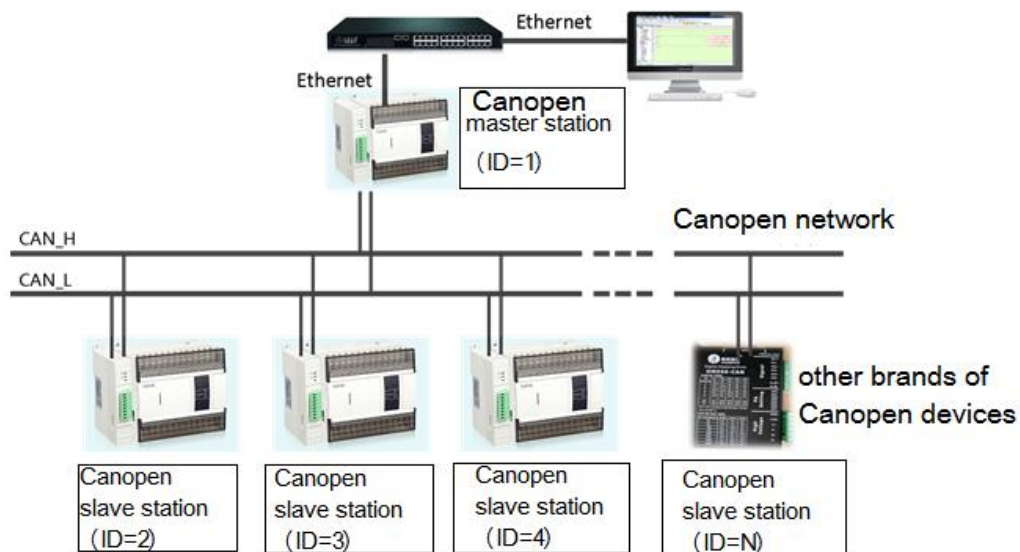
XD-COBX-ED module supports CANbus network communication. It adopts linear topology structure instead of traditional Modbus communication and free communication, which makes the whole system faster, more reliable and more stable. At the same time, it makes the complex wiring simpler and meets the requirements of improving project performance.



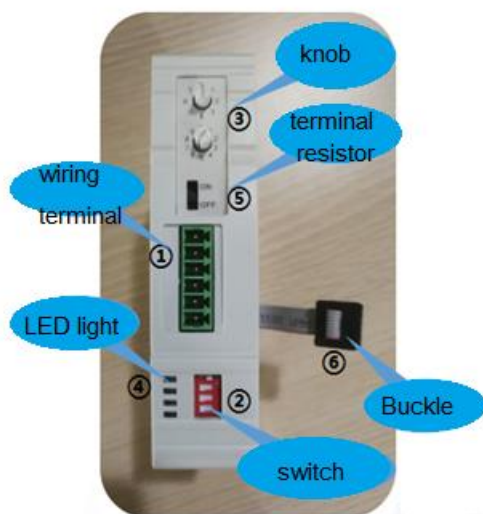
Features:

- ① The PLC exchanges data with other devices in CAN Open network through XD-COBX-ED.
- ② It is suitable for XD5/XDM/XD5E/XDME/XDC series PLC, each PLC can be extended by one XD-COBX-ED.
- ③ XD-COBX-ED can be used as both master and slave stations in CANopen network.

System Structure Diagram



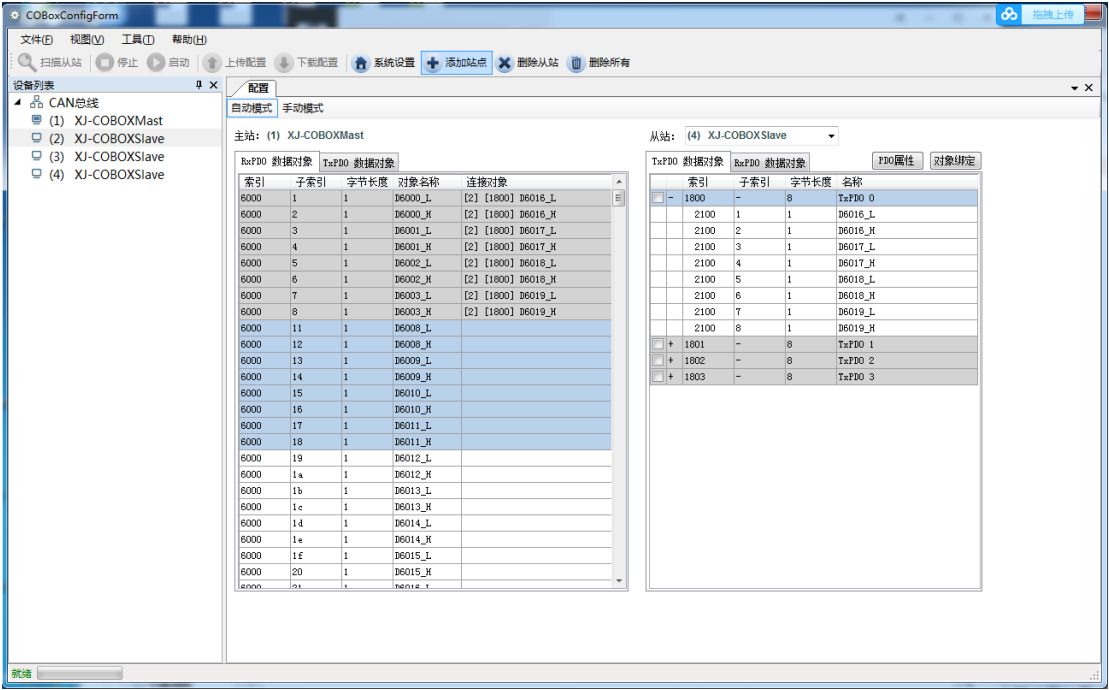
Appearance



- **High communication speed** up to 1M
- **Multiple communication nodes** CANbus can support up to 64 nodes.
- **Improve the reliability of the system**
120Ω terminal resistance dial switch, which can eliminate the reflection interference of CAN bus terminal signal.
- **Heart beat protection**
- **Wiring is simpler**

When CO-BOX is connected to CANbus network, only CAN_H terminal connected to CAN_H and CAN_L terminal connected to CAN_L can establish communication.

Professional Functional Parameter Configuration Interface



Specifications

Item	Specification
Power supply	24VDC (±10%)
Power	2W
Transmission mode	CAN
Electrical isolation	500VDC
Transmission cable	Two communication cables, one shielding cable and one grounding cable
Information type	PDO, SDO, SYNC, Emergency, NMT
Serial transmission speed	10 kbps, 20 kbps, 50 kbps, 100kbps, 125 kbps, 250 kbps, 500 kbps, 1 Mbps
Dimension	25.0mm*100.0mm*90.0mm

Dimension

